



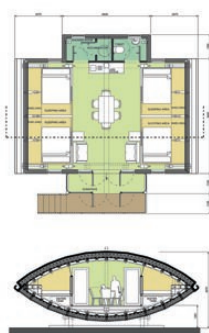
If you have a plot of land, maybe a backgarden, a hillside, a clearing, or even a car park, you can create your own low carbon paradise for weekends, holidays, work, or even as a primary residence.

Unhook yourself from the grid or selectively connect to the drains and mains - as suits you.

If you can build a flat pack sofa, you can probably master your own rural escape pod. All you need is a rubber mallet, a tape measure, screwdrivers, and power drill. Alternatively, our professional team of installers can sort you out.

Should you need planning permission - we can assist with your application.

So join some friends, plan a community and build a low carbon future - on your terms.

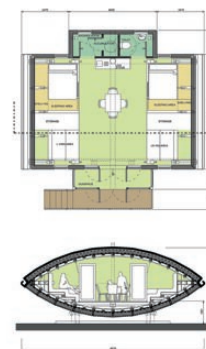


- ⚙ Can sleep up to 8 people
- ⚙ Cosy in winter and cool in summer
- ⚙ Works as a home or an office
- ⚙ Made from natural healthy materials
- ⚙ Superinsulation and draught-proofing
- ⚙ Perches on the land without expensive foundations or concrete
- ⚙ Heat with logs in winter or use the summer sun to provide a hot shower



- ⚙ Powered from pure sunlight, with an optional wind turbine
- ⚙ Doesn't need a connection to the drains or the meter unless you do
- ⚙ Includes water tanks with options to connect to a standpipe
- ⚙ Blends into the landscape with weatherboarding and a sedum roof
- ⚙ Will be loved for generations

Dimensions: 9m x 9m plot size



livingARKs™
www.livingarks.com

Tel: 01865 791150
Address: 42 Rowland Hill Court, Oxford OX11LE

livingARKs designed by:

zedfactory ltd®

www.zedfactory.com and www.zedstandards.com

Tel: 020 8404 1380





What is the zero carbon ARK?

Provides a sustainable space to do the things you've always wanted to do:

- ⚙ a quiet space to work
- ⚙ a bedroom space for friends and family
- ⚙ an inspirational space to be creative
- ⚙ a secluded space for well-being
- ⚙ an active space for exercise
- ⚙ a fun space for kids and adults to play
- ⚙ a romantic space to share an evening
- ⚙ space to escape...

Features:

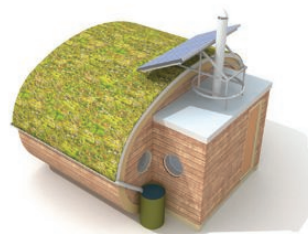
- quick and easy to assemble
- bespoke green roof to match your garden
- modular design allows quick extensions
- planning permission not required
- blends beautifully with the landscape
- deck and double glazed patio doors
- sheep's wool super-insulation
- 100% sustainable materials
- weatherboard cladding
- FSC timber frame

Options:

- modular extension with 2 extra rooms
- sofa bed, office suite, shelves & storage
- small log stove and high efficiency flue
- PV solar power on rotating platform
- battery storage up to 7 days
- durable solar powered lighting
- compact wind turbine for extra charge
- odourless composting toilet & sink
- rainwater harvesting system

Dimensions:

Plot size 5m x 5.5m



~~~~~  
**livingARKs™**  
www.livingarks.com

Tel: 01865 791150  
Address: 42 Rowland Hill Court, Oxford OX11LE

**zedfactory Ltd®**

www.zedfactory.com and www.zedstandards.com

Tel: 020 8404 1380

  
FSC  
TT-COC-001766