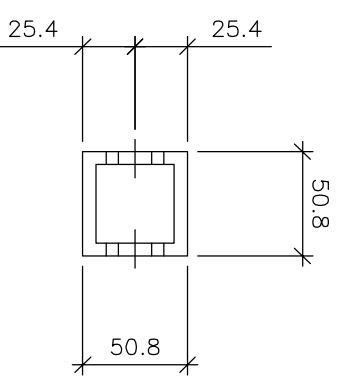
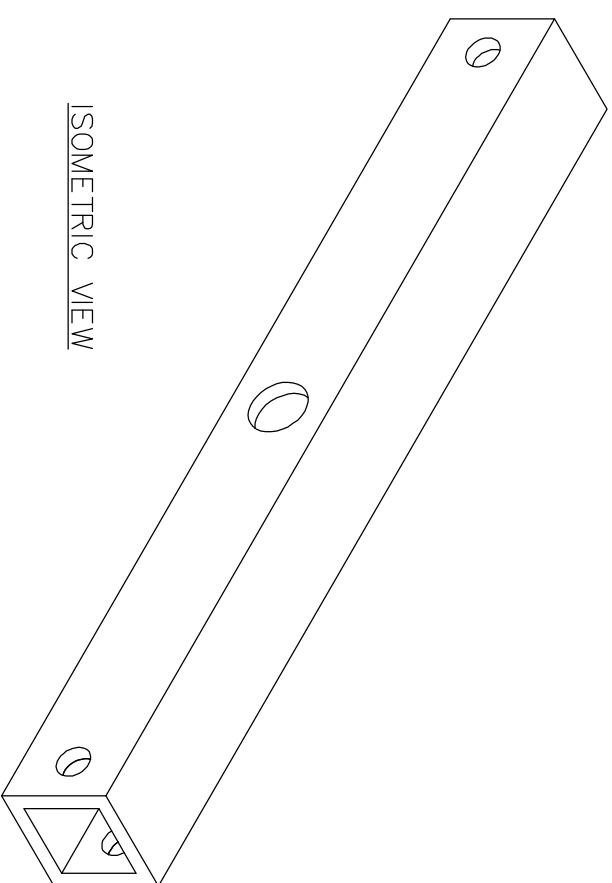
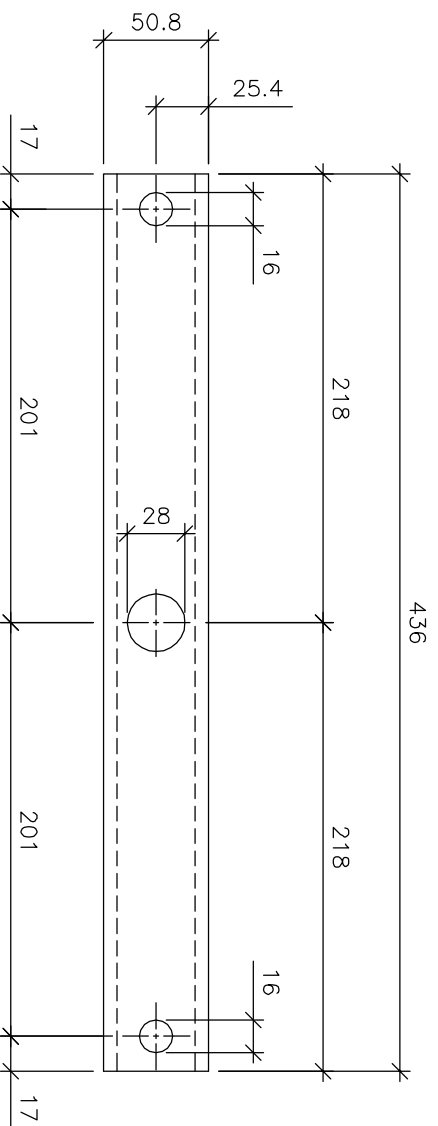
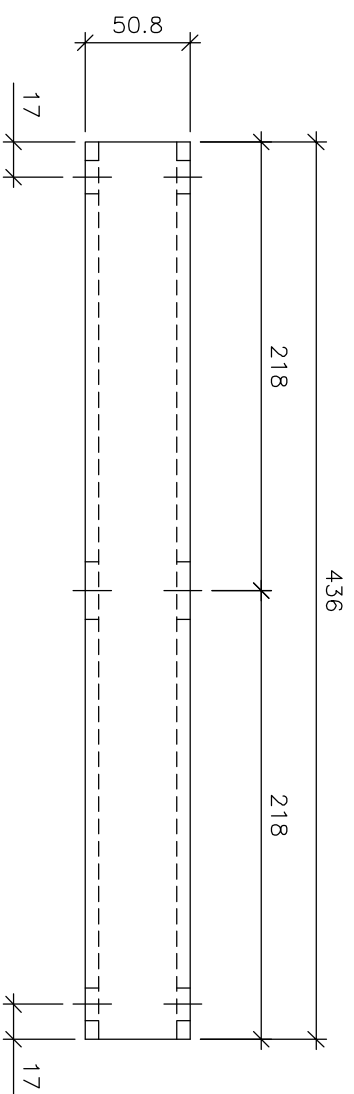


WELDED	CHECKED	FITTED	CUT
--------	---------	--------	-----



1 REQ'D (A)

MARK	QNT	DESCRIPTION	LENGTH	REMARKS	MARK	QNT	DESCRIPTION	LENGTH	REMARKS
A	1	HSS 50.8 x 50.8 x 6.35	436						

QNT	TYPE	LEN
	FIELD BOLTS	

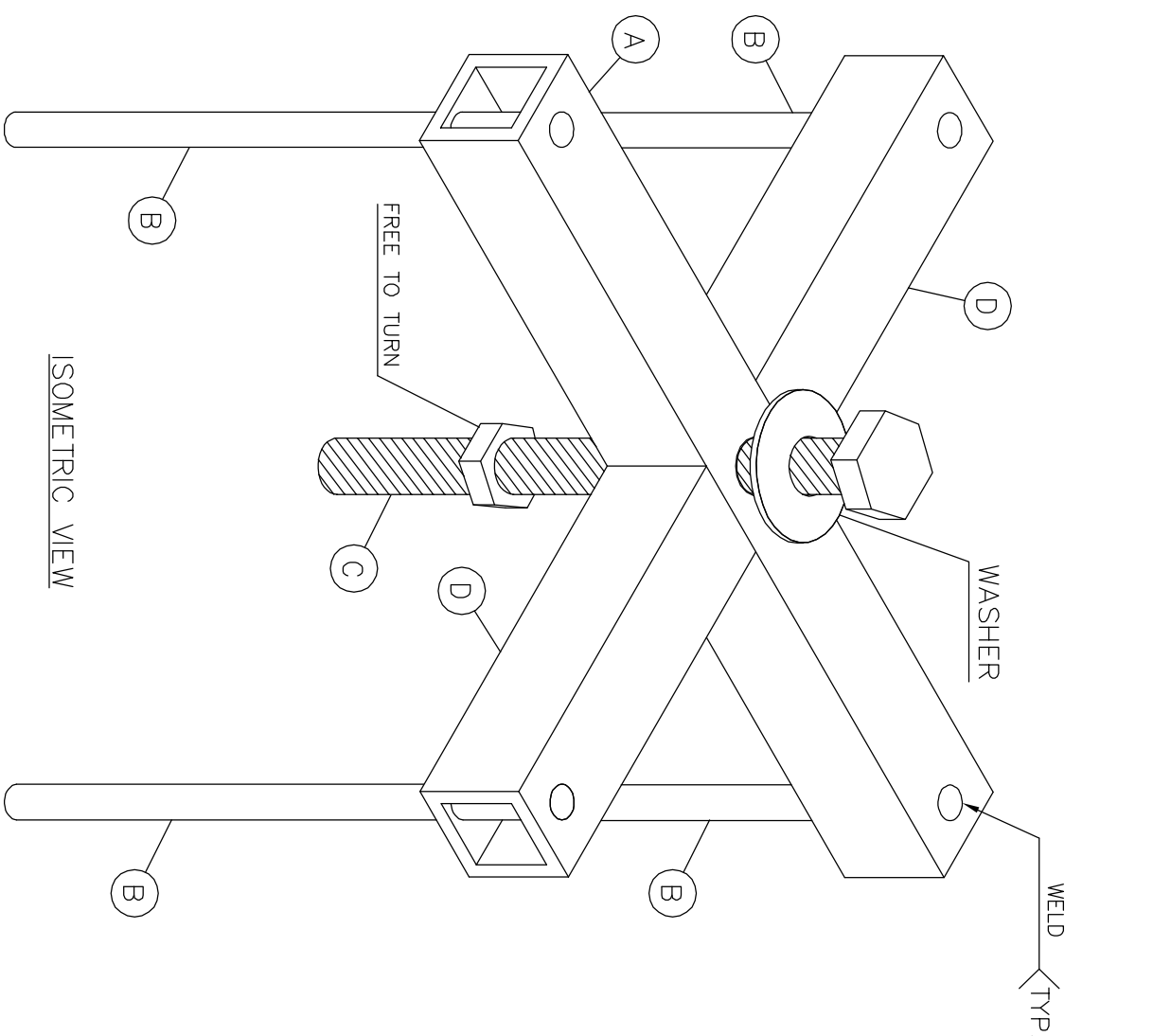
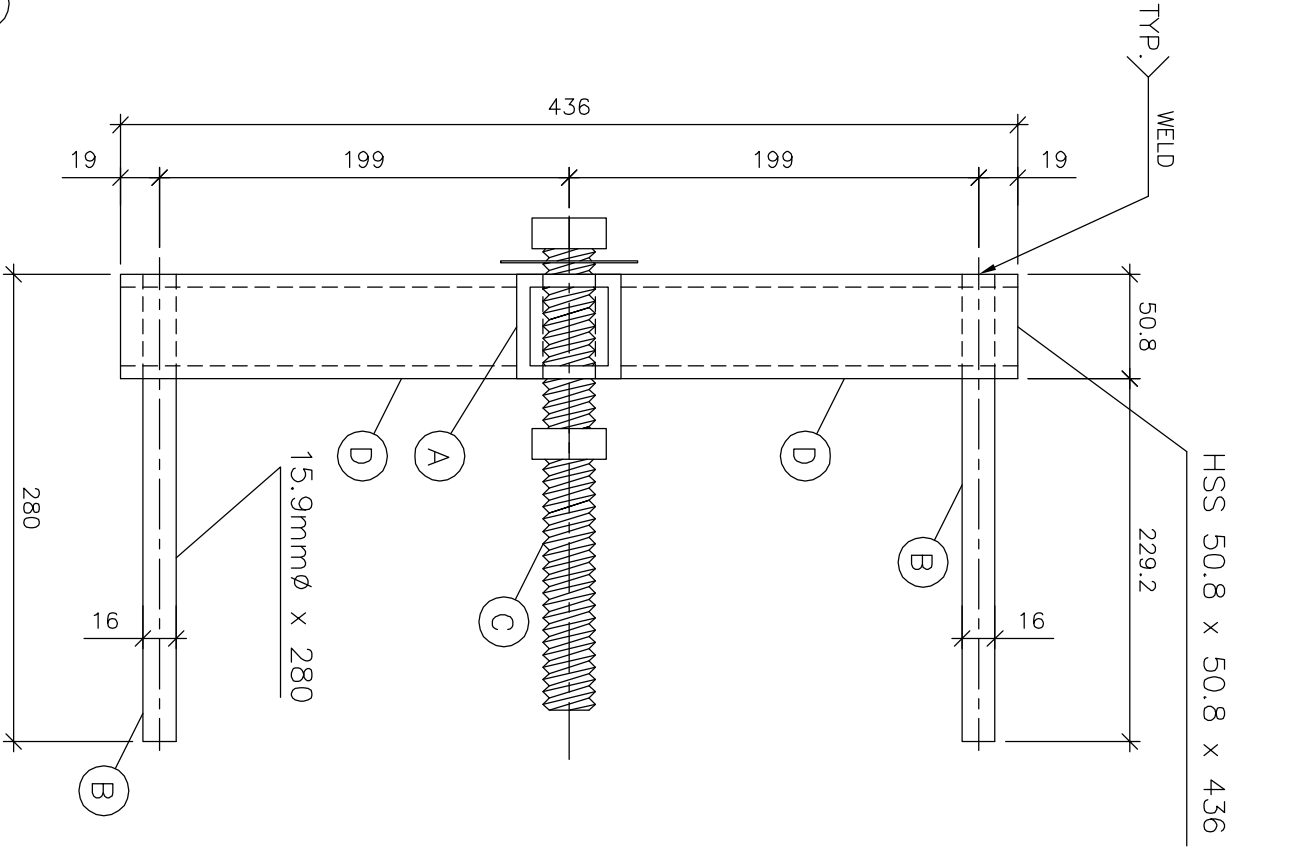
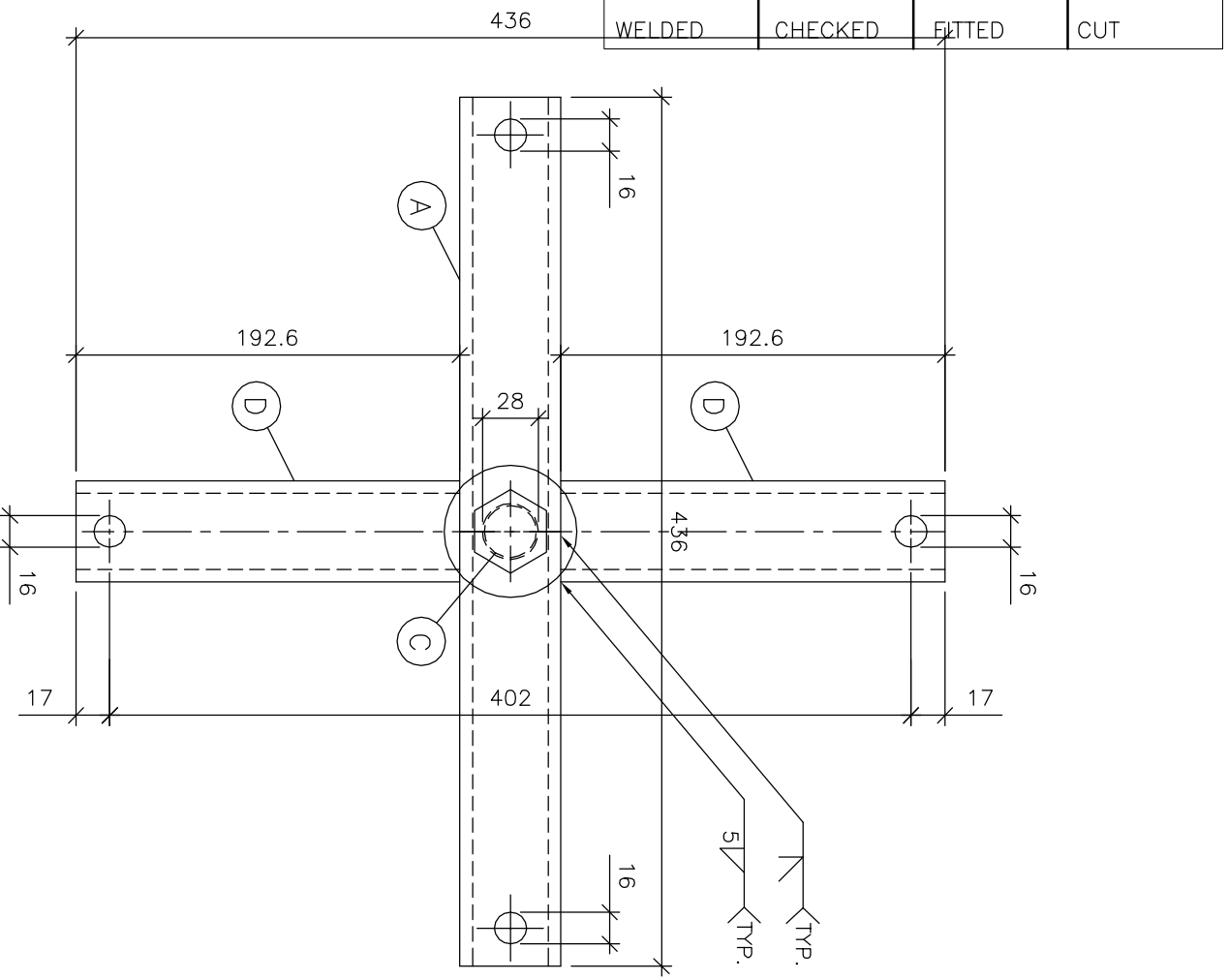
HOLES: 14 mm Dia.
PAINT: No Paint
MAT. SPEC: 300W

Rev 1	May 2008	RMC	SUPPORT ASSEMBLY MEMBERS
DRAWN	RMC	10/05/08	CUSTOMER David H. Manz
CHK'D BY			PROJECT STEEL MOLD
DWG REF			

Manz Engineering Ltd.
Alberta, Canada

JOB # 98054
DWG # 1
REV # 1

CUT	FITTED	CHECKED	WELDED
-----	--------	---------	--------



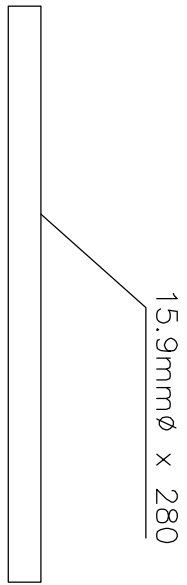
1 REQ'D (M)
SUPPORT ASSEMBLY

MARK	QNT	DESCRIPTION	LENGTH	REMARKS	MARK	QNT	DESCRIPTION	LENGTH	REMARKS
A	1	HSS 50.8 x 50.8 x 6.35	436						
B	4	15.9Ø ROD	280						
C	ONE	ASSEMBLY	287						
D	2	HSS 50.8 x 50.8 x 6.35	192.6						

QNT	TYPE	LEN
	FIELD BOLTS	
HOLES: 14 mm Dia.		
PAINT: No Paint		
MAT. SPEC: 300W		

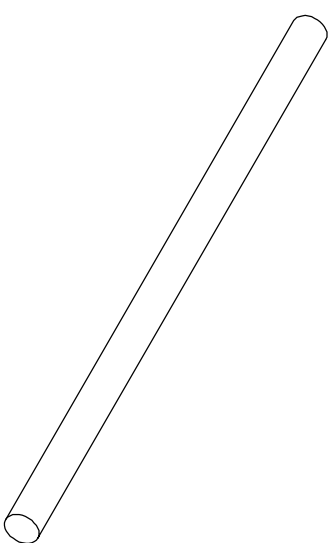
Rev 1	May 2008	RMC	SUPPORT ASSEMBLY MEMBERS
DRAWN	RMC	10/05/08	CUSTOMER David H. Manz
CHK'D BY			PROJECT STEEL MOLD
DWG REF			
Manz Engineering Ltd.			
Alberta, Canada			
JOB #	98054	DWG #	3
REV #	1		

CUT	FITTED	CHECKED	WELDED
-----	--------	---------	--------

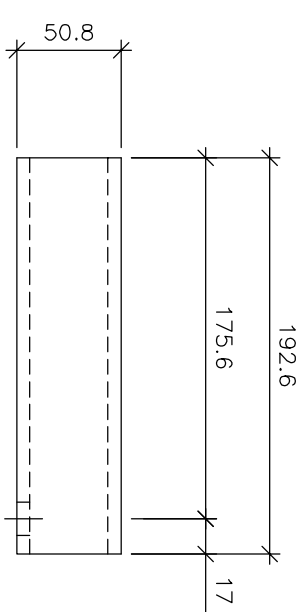


FRONT VIEW

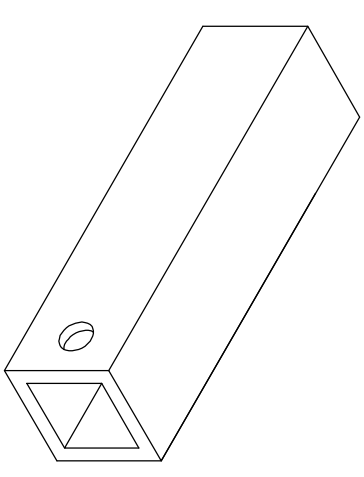
1 REQ'D (B)



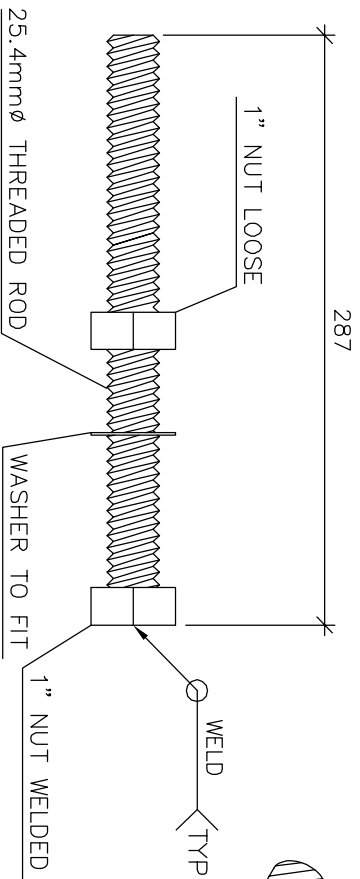
ISOMETRIC VIEW



TOP VIEW

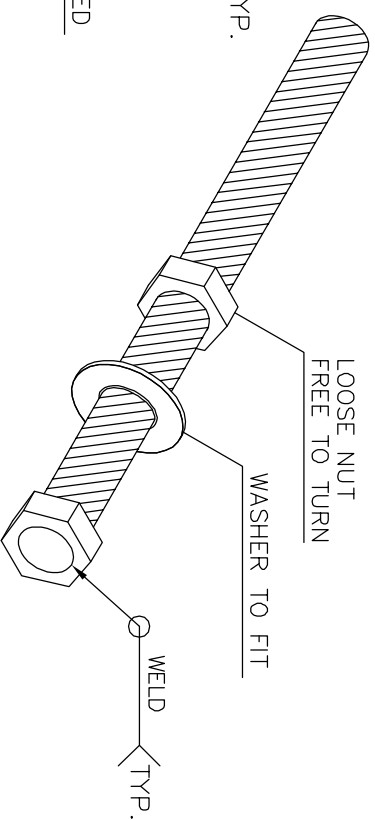


ISOMETRIC VIEW

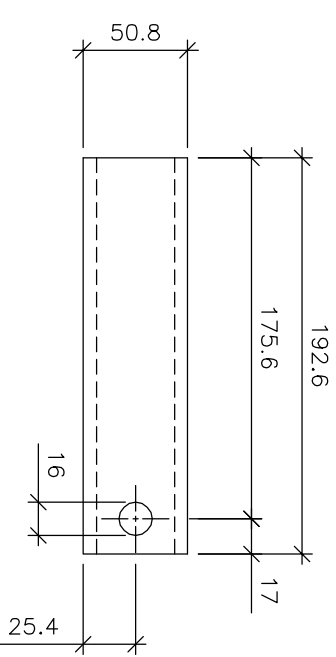


FRONT VIEW

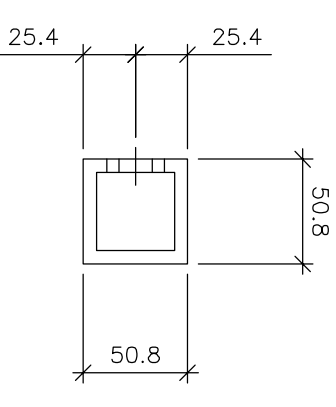
1 REQ'D (C)



ISOMETRIC VIEW



FRONT VIEW



RIGHT SIDE VIEW

2 REQ'D (D)

MARK	QNT	DESCRIPTION	LENGTH	REMARKS	MARK	QNT	DESCRIPTION	LENGTH	REMARKS
B	4	15.9mm \varnothing ROD	280						
C	ONE	ASSEMBLY	287						
D	2	HSS 50.8 x 50.8 x 6.35	192.6						

QNT	TYPE	LEN
	FIELD BOLTS	

HOLES: 14 mm Dia.
PAINT: No Paint
MAT. SPEC: 300W

NUMBER	DATE	BY	SUBJECT
Rev 1	May 2008	RMC	SUPPORT ASSEMBLY MEMBERS

DRAWN: RMC
CHK'D BY:
DWG REF:

CUSTOMER: David H. Manz
PROJECT: STEEL MOLD

Manz Engineering Ltd.
Alberta, Canada

JOB #: 98054
DWG #: 2
REV #: 1