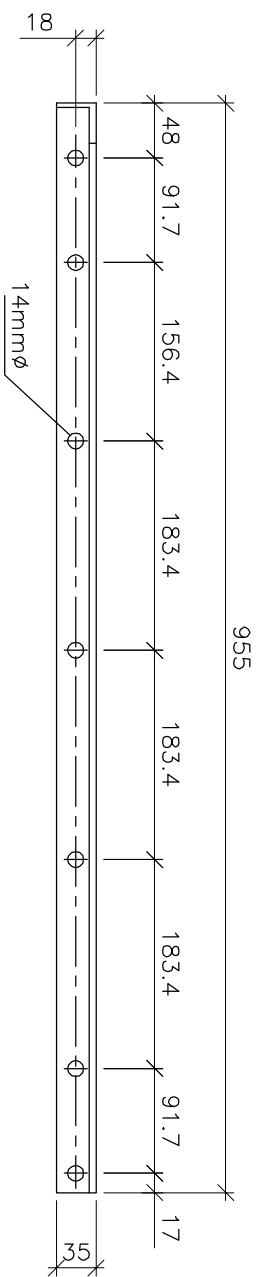


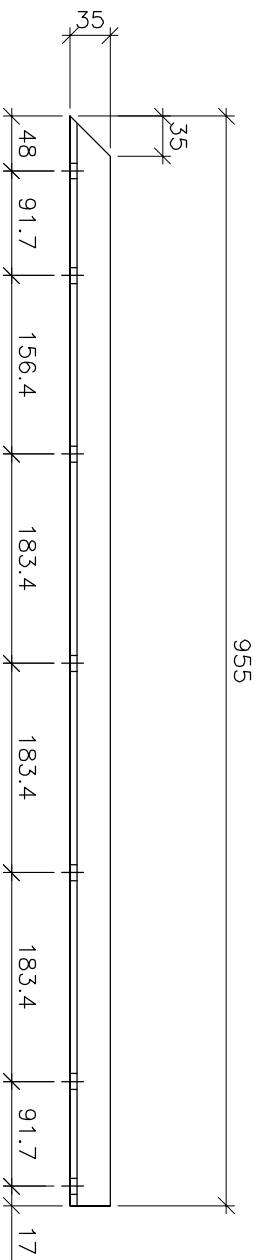




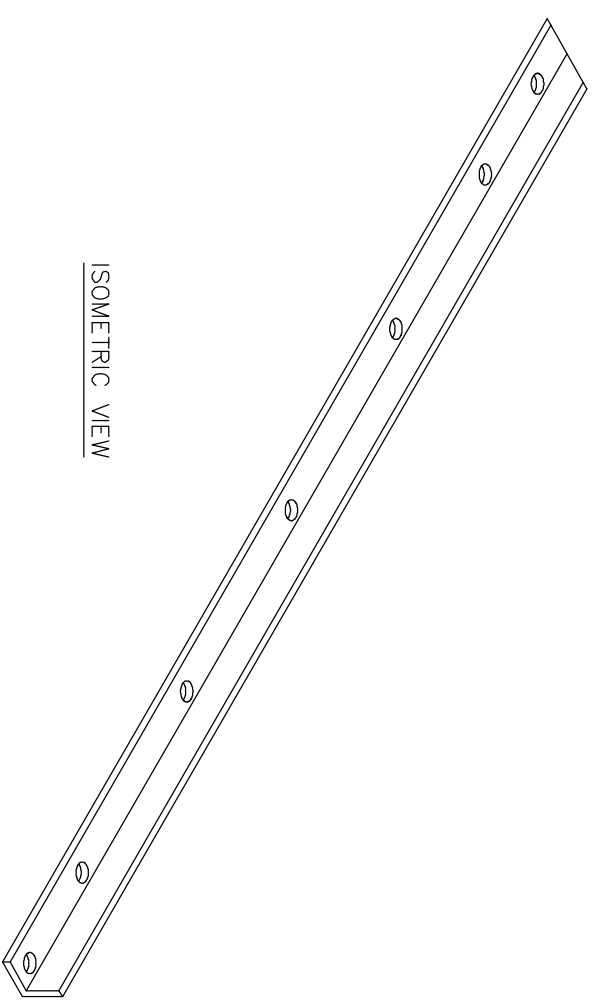
WELDED	CHECKED	FITTED	CUT
--------	---------	--------	-----



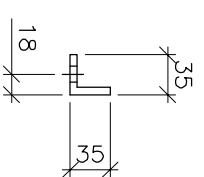
TOP VIEW



FRONT VIEW



ISOMETRIC VIEW



RIGHT SIDE VIEW

1 REQ'D  $\text{\textcircled{D1}}$

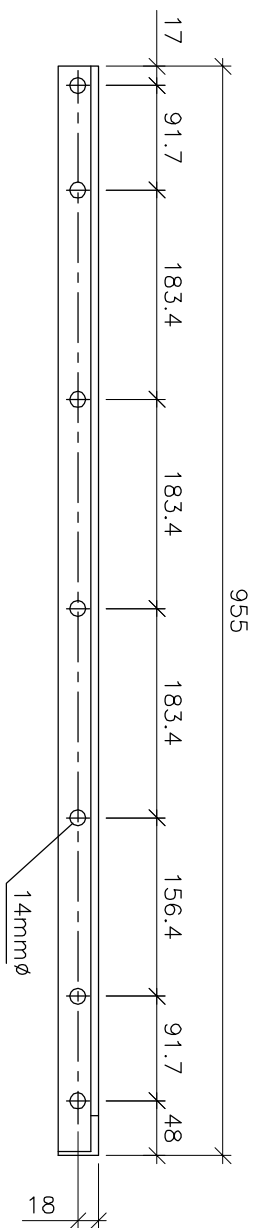
MARK	QNT	DESCRIPTION	LENGTH	REMARKS	MARK	QNT	DESCRIPTION	LENGTH	REMARKS
D1	1	L 35 x 35 x 6.35	955						

QNT	TYPE	LEN
	FIELD BOLTS	

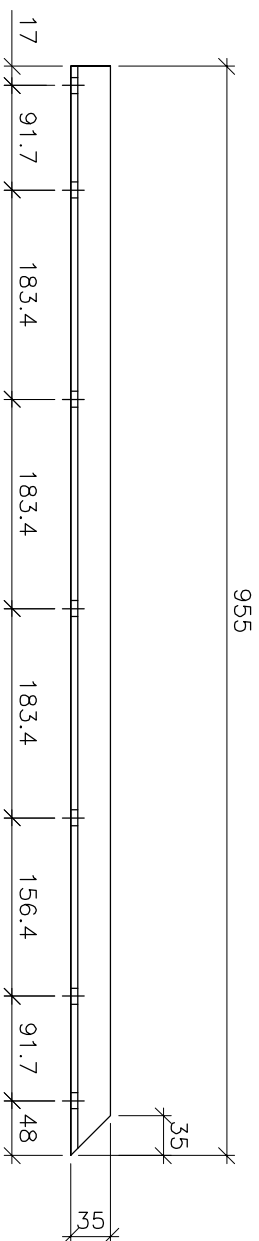
HOLES: 14 mm Dia  
PAINT: No Paint  
MAT. SPEC: 300W

NUMBER	DATE	BY	SUBJECT
—	May 2008	RMC	955mm Front Panel Angle1
DRAWN	CUSTOMER David H. Manz		
CHK'D BY	PROJECT STEEL MOLD		
DWG REF	Manz Engineering Ltd. Alberta, Canada		
JOB #	DWG #	REV #	
98054	5	0	

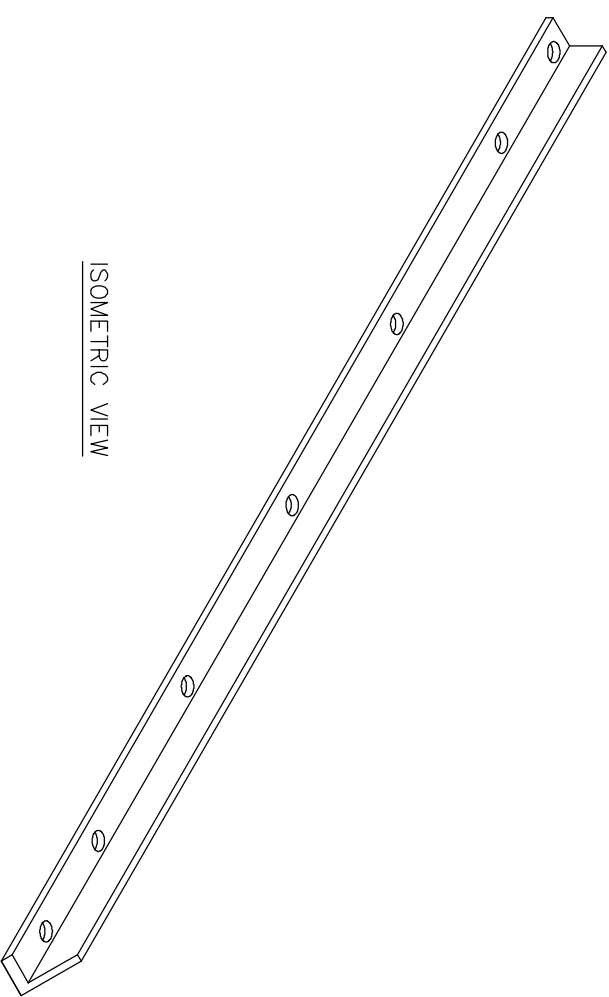
WELDED	CHECKED	FITTED	CUT
--------	---------	--------	-----



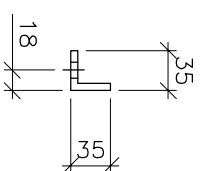
TOP VIEW



FRONT VIEW



ISOMETRIC VIEW



RIGHT SIDE VIEW

1 REQ'D  $\varnothing 2$

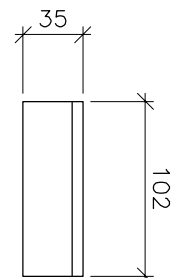
MARK	QNT	DESCRIPTION	LENGTH	REMARKS	MARK	QNT	DESCRIPTION	LENGTH	REMARKS
D2	1	L 35 x 35 x 6.35	955						

QNT	TYPE	LEN
	FIELD BOLTS	

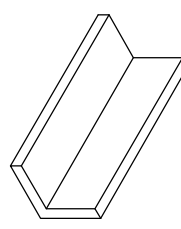
HOLES: 14 mm Dia  
 PAINT: No Paint  
 MAT. SPEC: 300W

NUMBER	DATE	BY	SUBJECT
—	May 2008	RMC	955mm Front Panel Angle2
DRAWN	CUSTOMER David H. Manz		
CHK'D BY	PROJECT STEEL MOLD		
DWG REF	Manz Engineering Ltd. Alberta, Canada		
JOB #	DWG #	REV #	
98054	5	0	

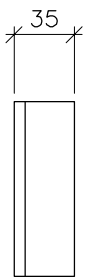
WELDED	CHECKED	FITTED	CUT
--------	---------	--------	-----



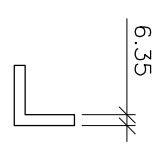
TOP VIEW



ISOMETRIC VIEW

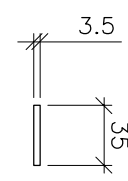


FRONT VIEW

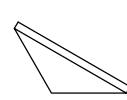


SIDE VIEW

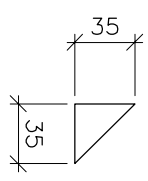
4 REQ'D (F)



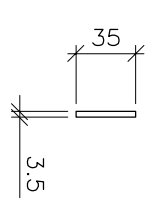
TOP VIEW



ISOMETRIC VIEW



FRONT VIEW



SIDE VIEW

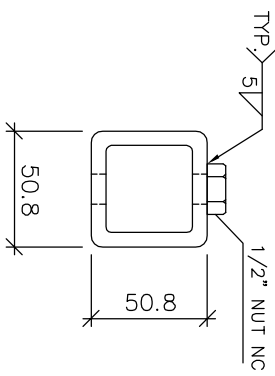
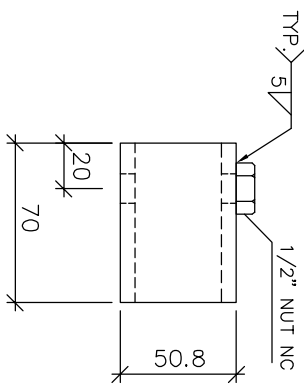
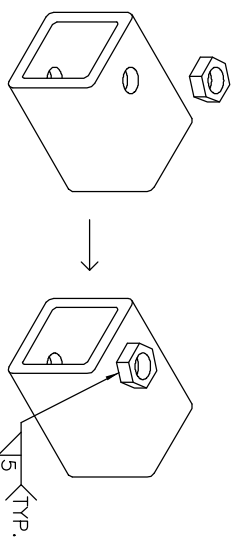
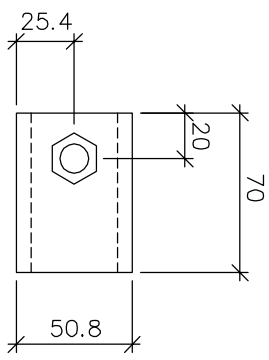
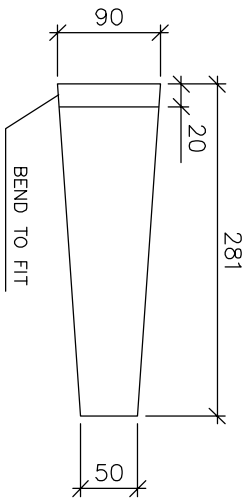
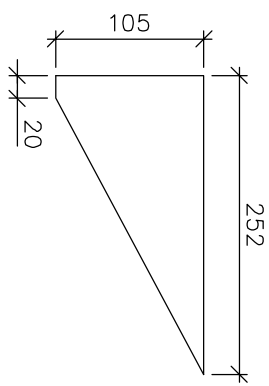
8 REQ'D (G)

F	4	L 35 x 35 x 6.35	102						
G	8	PL 3.5 x 35	35						
MARK	QNT	DESCRIPTION	LENGTH	REMARKS	MARK	QNT	DESCRIPTION	LENGTH	REMARKS

QNT	TYPE	LEN
	FIELD BOLTS	
HOLES: 14 mm Dia		
PAINT: No Paint		
MAT. SPEC: 300W		

NUMBER	DATE	BY	SUBJECT
—	May 2008	RMC	Miscellaneous Steel Members
DRAWN			
CHK'D BY			
DWG REF			
PROJECT STEEL MOLD			
CUSTOMER David H. Manz			
Manz Engineering Ltd. Alberta, Canada			
JOB #	DWG #	REV #	
98054	5	0	

WELDED	CHECKED	FITTED	CUT
--------	---------	--------	-----



1 REQ'D (K)

MARK	QTY	DESCRIPTION	LENGTH	REMARKS	MARK	QTY	DESCRIPTION	LENGTH	REMARKS
H	2	PL 3.5mm 105	252						
J	ONE	PL 3.5mm 50/90	281						
K	ONE	HSS 50.8 x 50.8 x 6.35	70						

QTY	TYPE	LEN
	FIELD BOLTS	

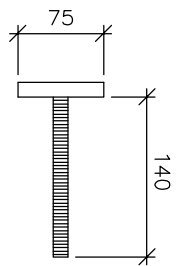
HOLES:

PAINT: No Paint

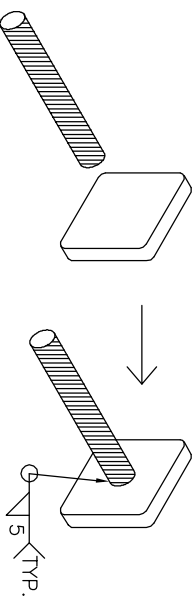
MAT. SPEC: 300W

NUMBER	DATE	BY	SUBJECT
—	May 2008	RMC	Miscellaneous
DRAWN	DHM	22/11/06	CUSTOMER David H. Manz
CHK'D BY			PROJECT STEEL MOLD
DWG REF			
Manz Engineering Ltd.			
Alberta, Canada			
JOB #	98054	DWG #	1
REV #	0		

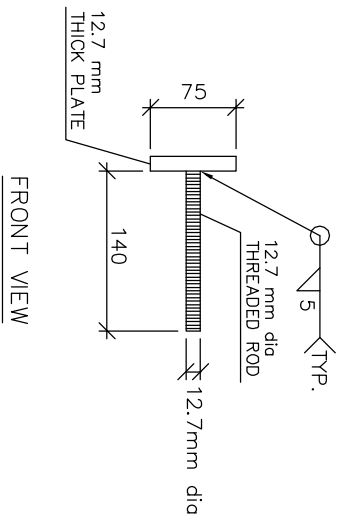
CUT	FITTED	CHECKED	WELDED
-----	--------	---------	--------



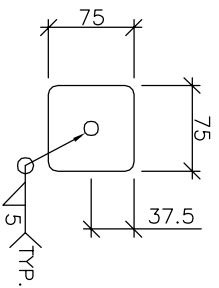
TOP VIEW



ISOMETRIC VIEW

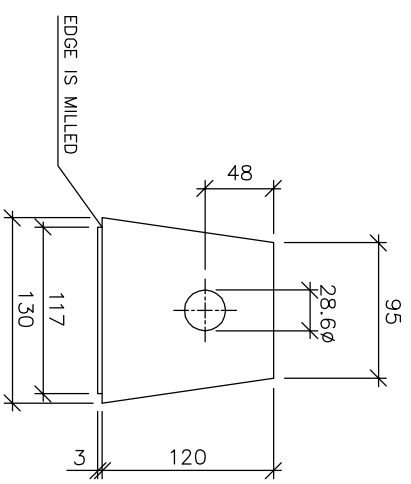


FRONT VIEW

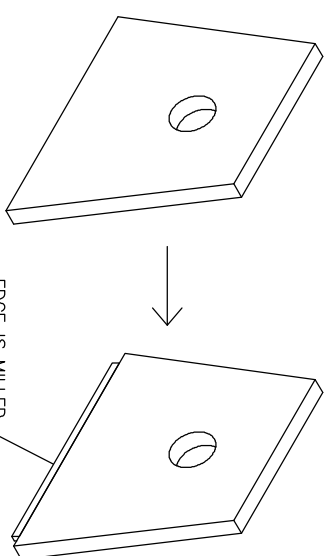


RIGHT SIDE VIEW

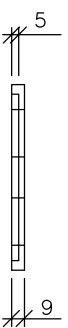
1 REQ'D (J)



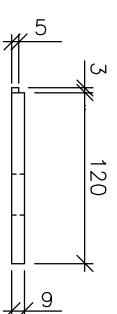
TOP VIEW



ISOMETRIC VIEW

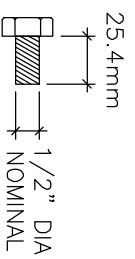


FRONT VIEW

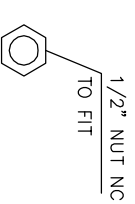


RIGHT SIDE VIEW

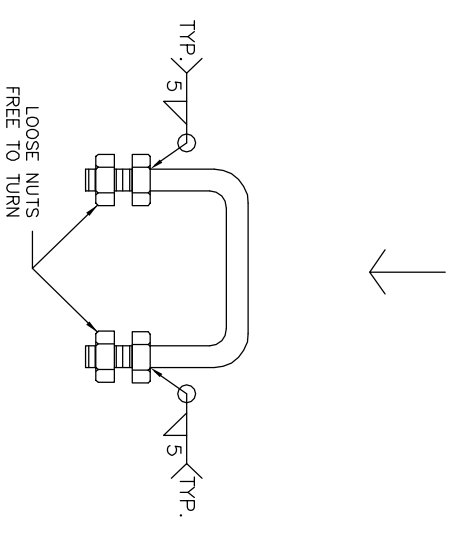
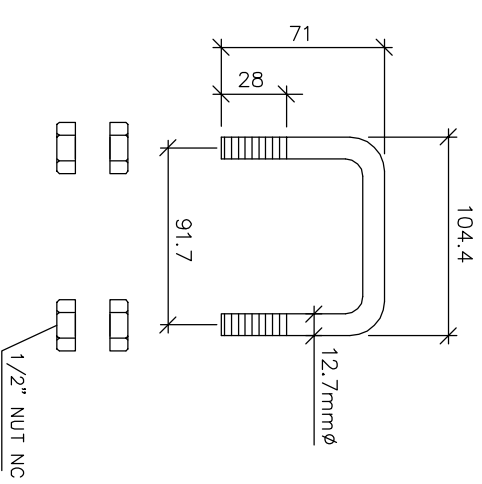
1 REQ'D (K)



34 REQ'D (M)



34 REQ'D (N)



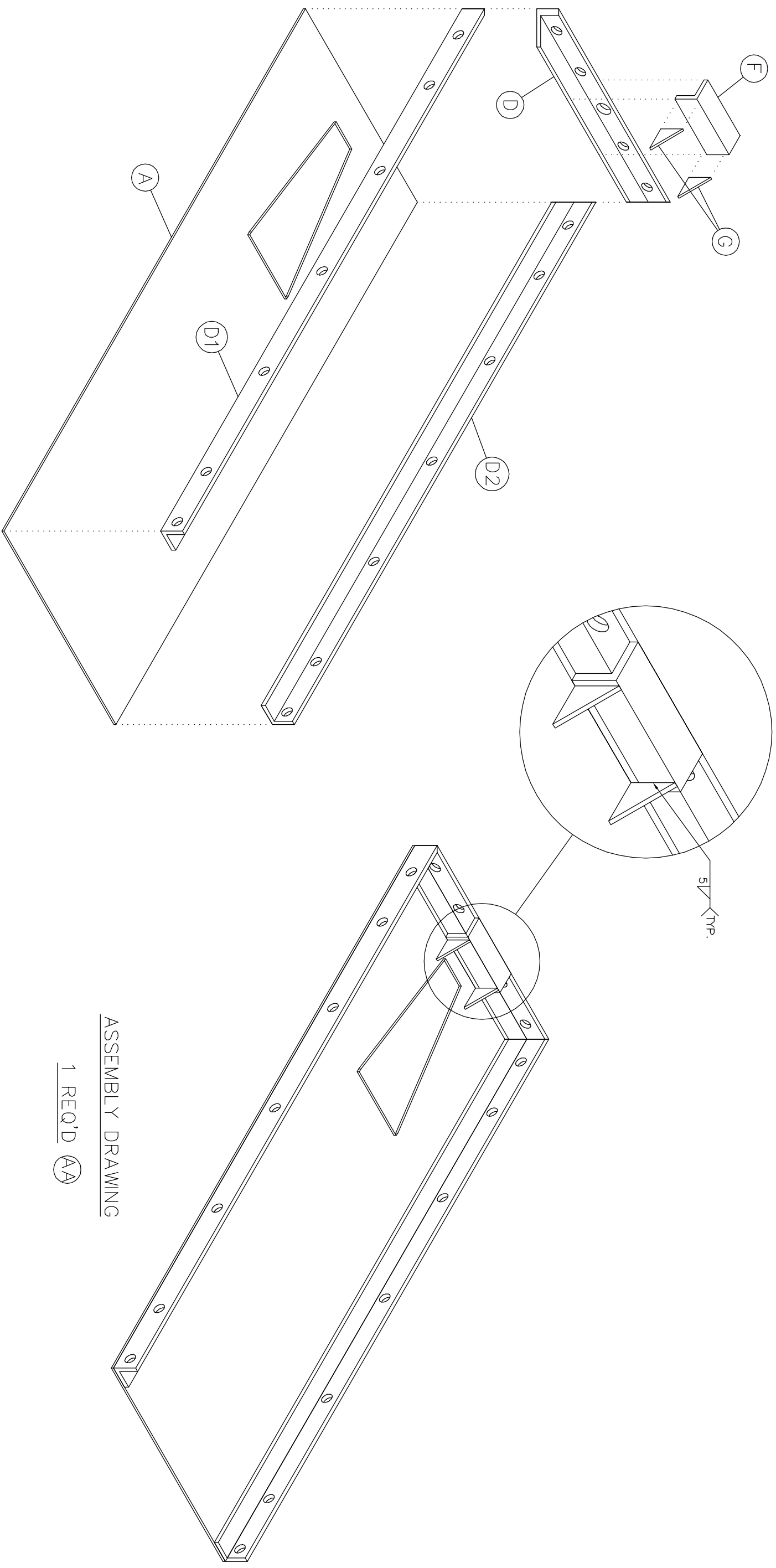
4 REQ'D (L)

MARK	QTY	DESCRIPTION	LENGTH	REMARKS	MARK	QTY	DESCRIPTION	LENGTH	REMARKS
J	ONE	ASSEMBLY	140						
K	ONE	PL 9mm 95/130	120						
L	4	ASSEMBLY	104.4						

QTY	TYPE	LEN
	FIELD BOLTS	

HOLE:		PAINT: No Paint		MAT. SPEC: 300W	
DRAWN		DATE		SUBJECT	
DHW		May 2008		Miscellaneous Details	
CHK'D BY		RMC		BY	
DHW		22/11/06		CUSTOMER David H. Manz	
DHW		22/11/06		PROJECT STEEL MOLD	
JOB #		DWG #		REV #	
98054		2		0	
Manz Engineering Ltd. Alberta, Canada					

WELDED	CHECKED	FITTED	CUT
--------	---------	--------	-----



ASSEMBLY DRAWING

1 REQ'D (AA)

MARK	QNT	DESCRIPTION	LENGTH	REMARKS	MARK	QNT	DESCRIPTION	LENGTH	REMARKS
A	1	PL 3.5mm x 359	955						
D	1	L 35 x 35 x 6.35	359						
D1	1	L 35 x 35 x 6.35	955						
D2	1	L 35 x 35 x 6.35	955						
F	1	L 35 x 35 x 6.35	102						
G	2	L 3.5 x 35	35						

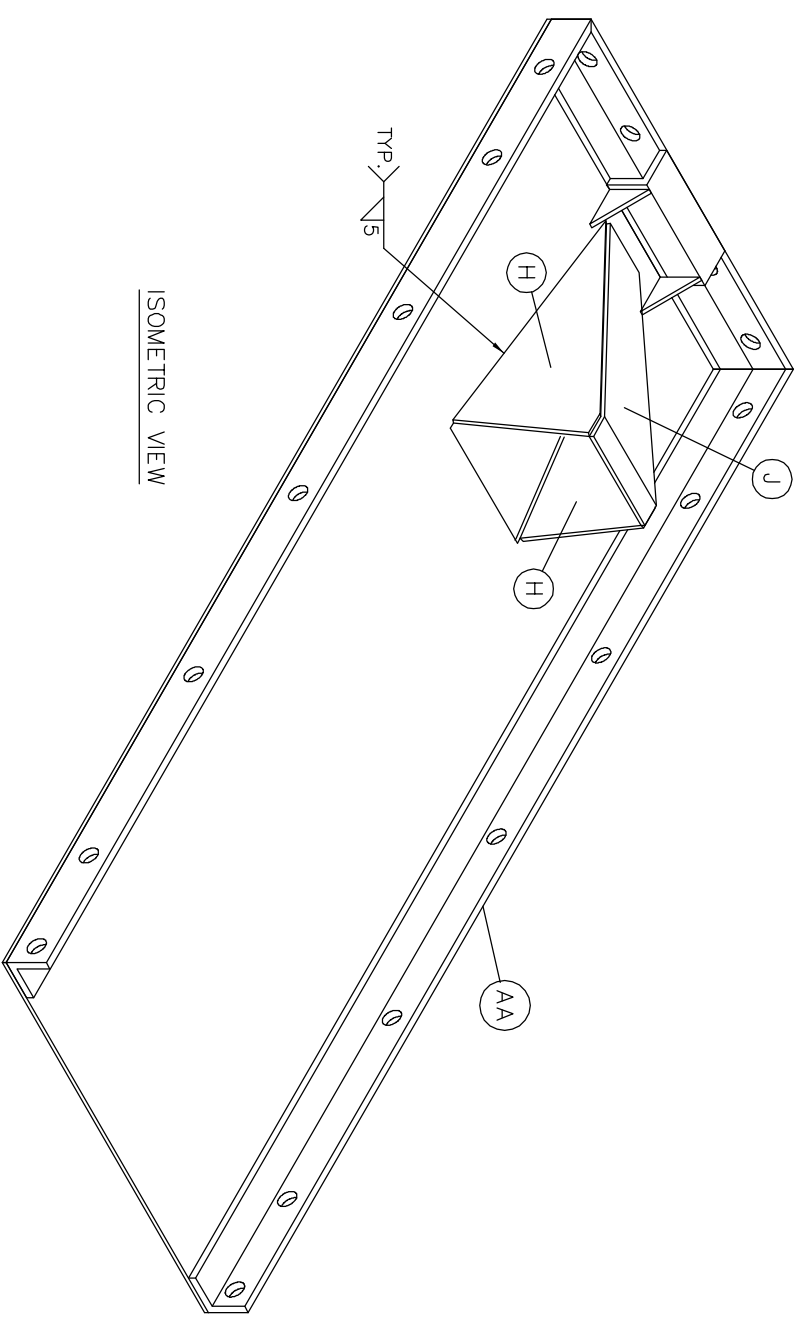
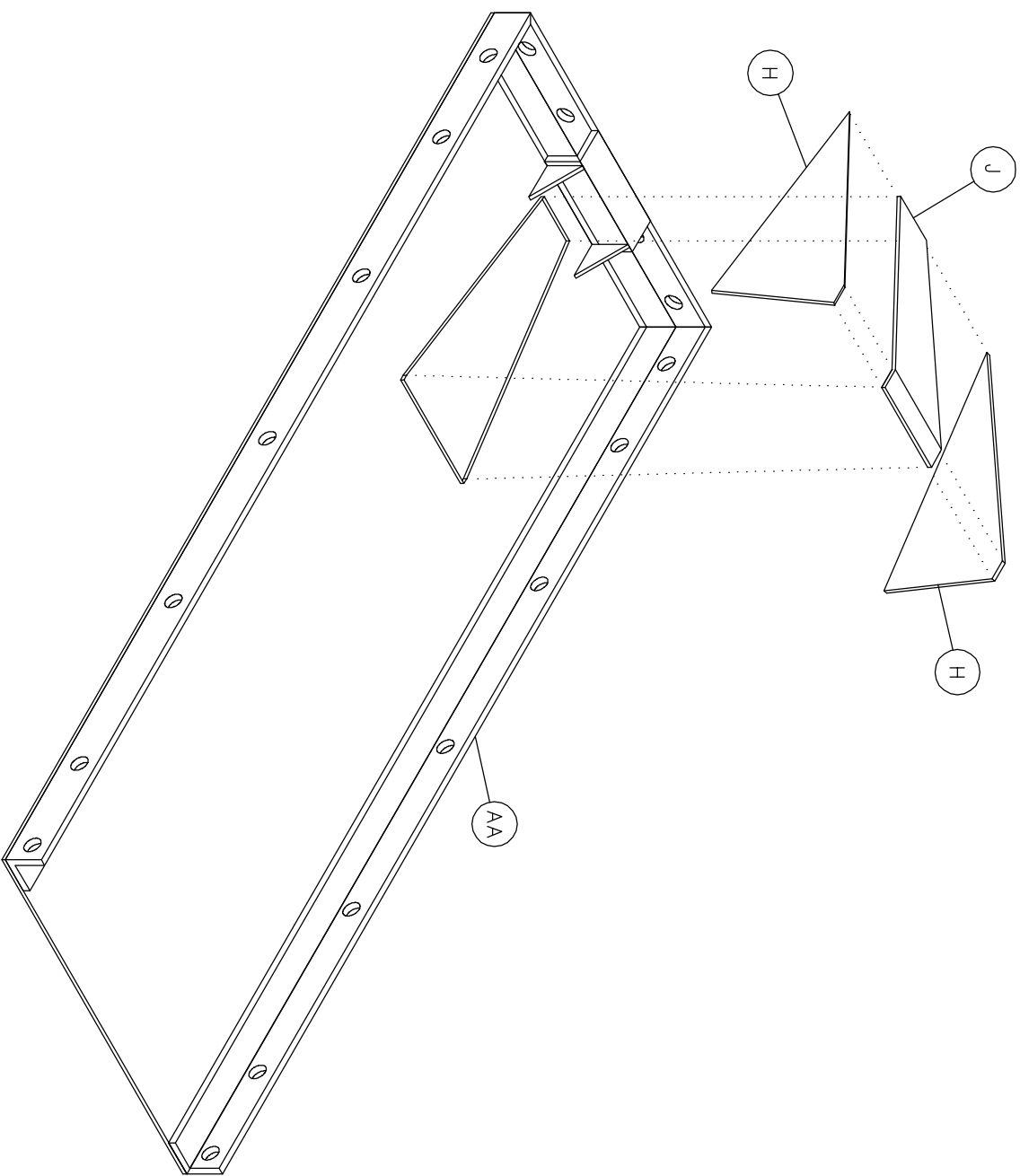
QNT	TYPE	LEN
	FIELD BOLTS	

HOLES: 14 mm Dia  
 PAINT: No Paint  
 MAT. SPEC: 300W

NUMBER	DATE	BY	SUBJECT
—	May 2008	RMC	Front Wall Panel AA
DRAWN	CUSTOMER David H. Manz		
CHK'D BY	PROJECT STEEL MOLD		
DWG REF			
Manz Engineering Ltd.			
Alberta, Canada			
JOB #	98054	DWG #	6
REV #	0		



WELDED	CHECKED	FITTED	CUT
--------	---------	--------	-----



ISOMETRIC VIEW

ASSEMBLY DRAWING (FRONT PANEL AA)  
JOINING MEMBERS (H) AND (J)

MARK	QTY	DESCRIPTION	LENGTH	REMARKS	MARK	QTY	DESCRIPTION	LENGTH	REMARKS
AA	ONE	ASSEMBLY							
H	2	PL 3.5mm 105	252						
J	ONE	PL 3.5mm 50/90	281						

QTY	TYPE	LEN
	FIELD BOLTS	

HOLES:

PAINT: No Paint

MAT. SPEC: 300W

NUMBER	DATE	BY	SUBJECT
—	May 2008	RMC	Wall panel member (Front)
DRAWN	DHM	22/11/06	CUSTOMER David H. Manz
CHK'D BY			PROJECT STEEL MOLD
DWG REF			

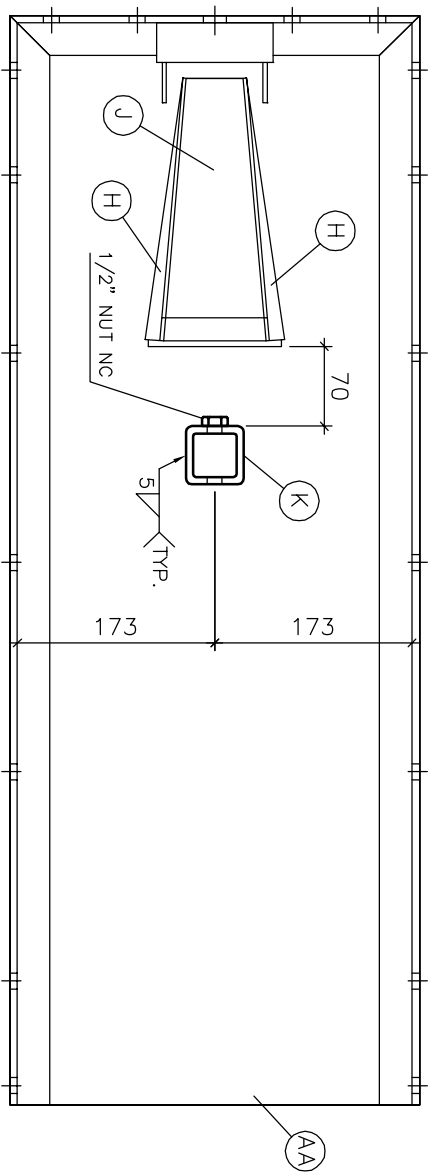
Manz Engineering Ltd.  
Alberta, Canada

JOB # 98054

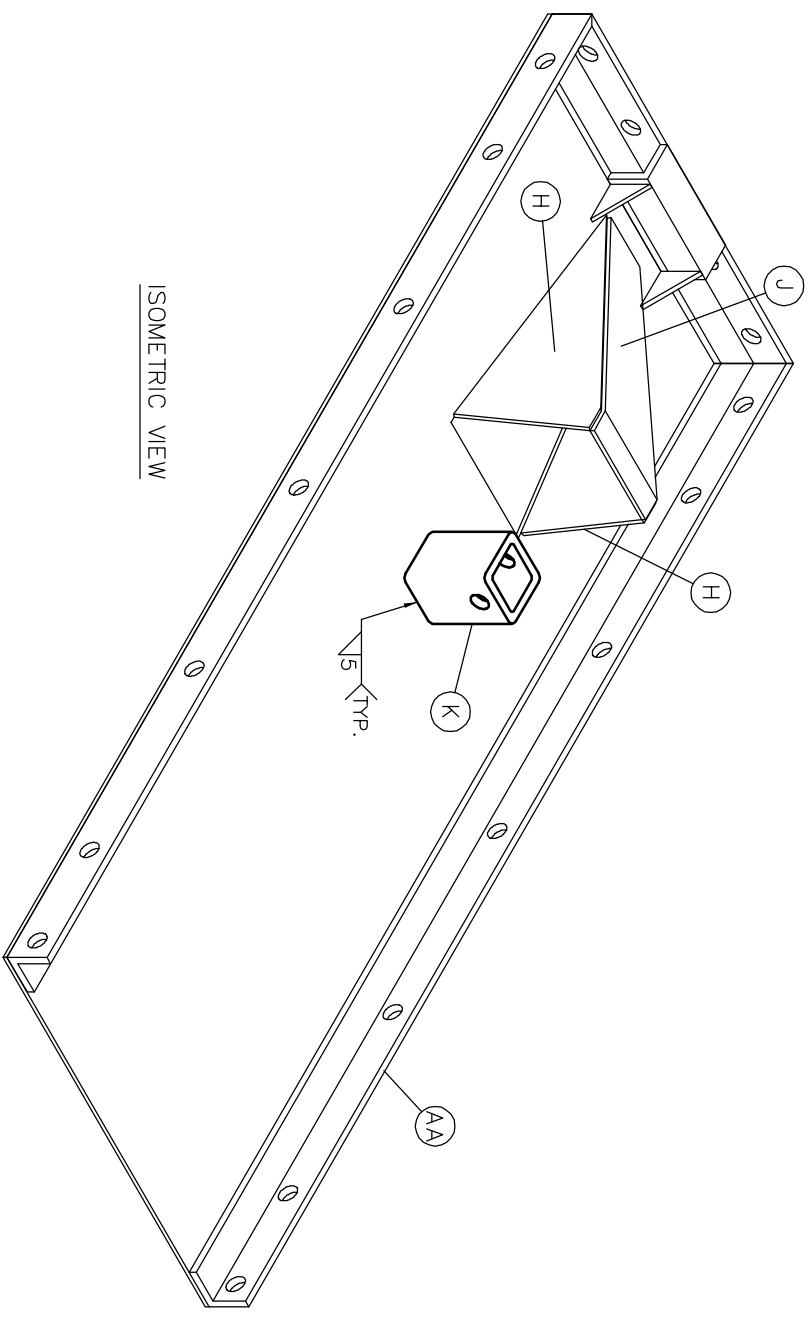
DWG # 3

REV # 0

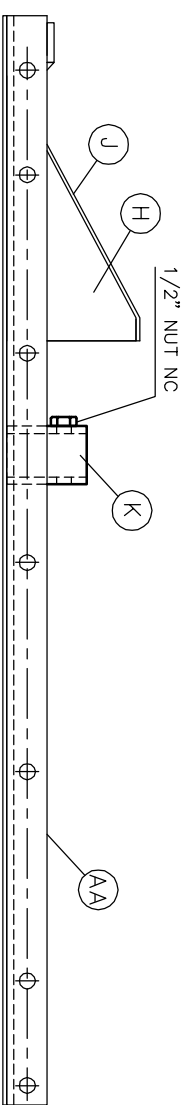
WELDED	CHECKED	FITTED	CUT
--------	---------	--------	-----



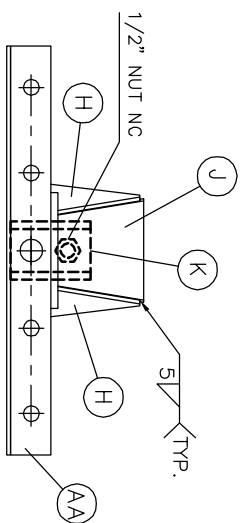
TOP VIEW



ISOMETRIC VIEW



FRONT VIEW



LEFT SIDE VIEW

ASSEMBLY DRAWING (FRONT PANEL AA)  
JOINING MEMBER (K)

MARK	QTY	DESCRIPTION	LENGTH	REMARKS	MARK	QTY	DESCRIPTION	LENGTH	REMARKS
AA	ONE	ASSEMBLY							
H	2	PL 3.5mm 105	252						
J	ONE	PL 3.5mm 50/90	281						
K	ONE	HSS 6.35 x 50.8	50.8						

QTY	TYPE	LEN
	FIELD BOLTS	

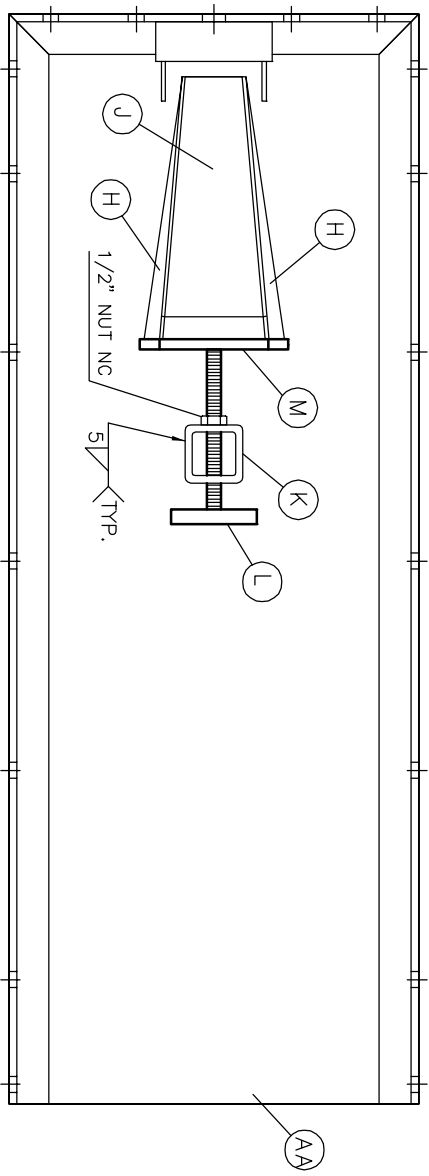
HOLES:  
PAINT: No Paint  
MAT. SPEC: 300W

NUMBER	DATE	BY	SUBJECT
—	May 2008	RMC	Wall panel member (Front)
DRAWN	DATE	BY	SUBJECT
DHM	22/11/06		CUSTOMER David H. Manz
CHK'D BY			PROJECT STEEL MOLD
DWG REF			

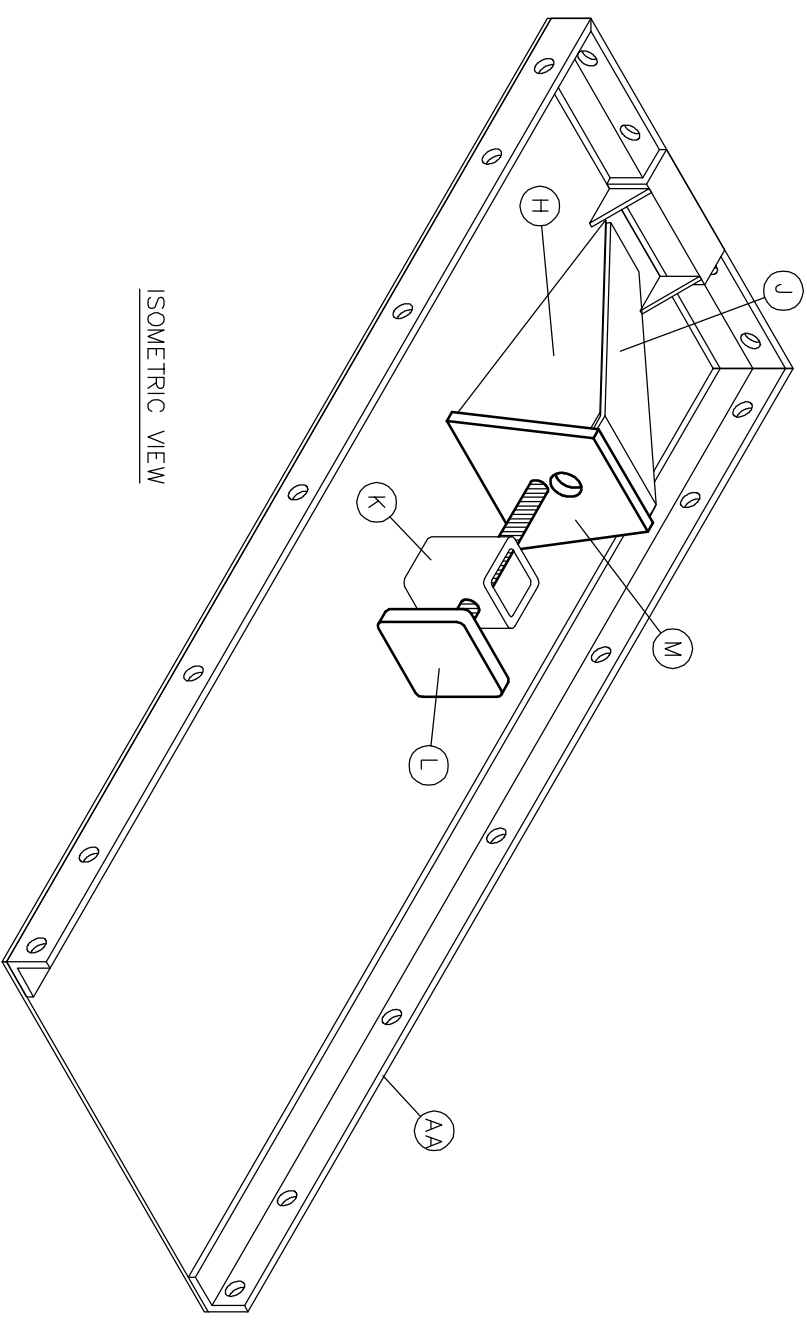
Manz Engineering Ltd.  
Alberta, Canada

JOB # 98054  
DWG # 3  
REV # 0

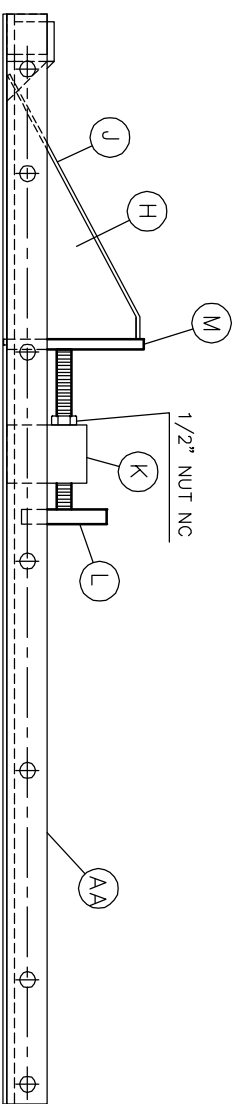
WELDED	CHECKED	FITTED	CUT
--------	---------	--------	-----



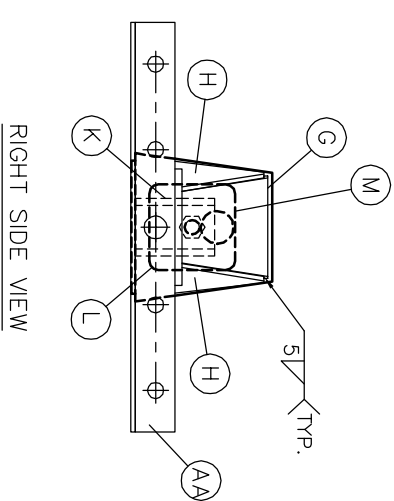
TOP VIEW



ISOMETRIC VIEW



FRONT VIEW



RIGHT SIDE VIEW

ASSEMBLY DRAWING (FRONT PANEL AA)  
JOINING MEMBERS (L) AND (M)

MARK	QTY	DESCRIPTION	LENGTH	REMARKS	MARK	QTY	DESCRIPTION	LENGTH	REMARKS
AA	ONE	ASSEMBLY							
H	2	PL 3.5mm 105	252						
J	ONE	PL 3.5mm 50/90	281						
K	ONE	HSS 50.8 x 50.8 x 6.35	70						
L	ONE	PL 9mm	281						
M	ONE	ASSEMBLY	140						

QTY	TYPE	LEN
	FIELD BOLTS	

HOLES:

PAINT: No Paint

MAT. SPEC: 300W

NUMBER	DATE	BY	SUBJECT
—	May 2008	RMC	Wall panel members (Front)
DRAWN	DATE		
DHM	22/11/06		
CHK'D BY			
DWG REF			
PROJECT STEEL MOLD			
CUSTOMER David H. Manz			
Manz Engineering Ltd.			
Alberta, Canada			
JOB #	DWG #	REV #	
98054	5	0	